



GROSSMONT-CUYAMACA
COMMUNITY COLLEGE DISTRICT



Making the Grade

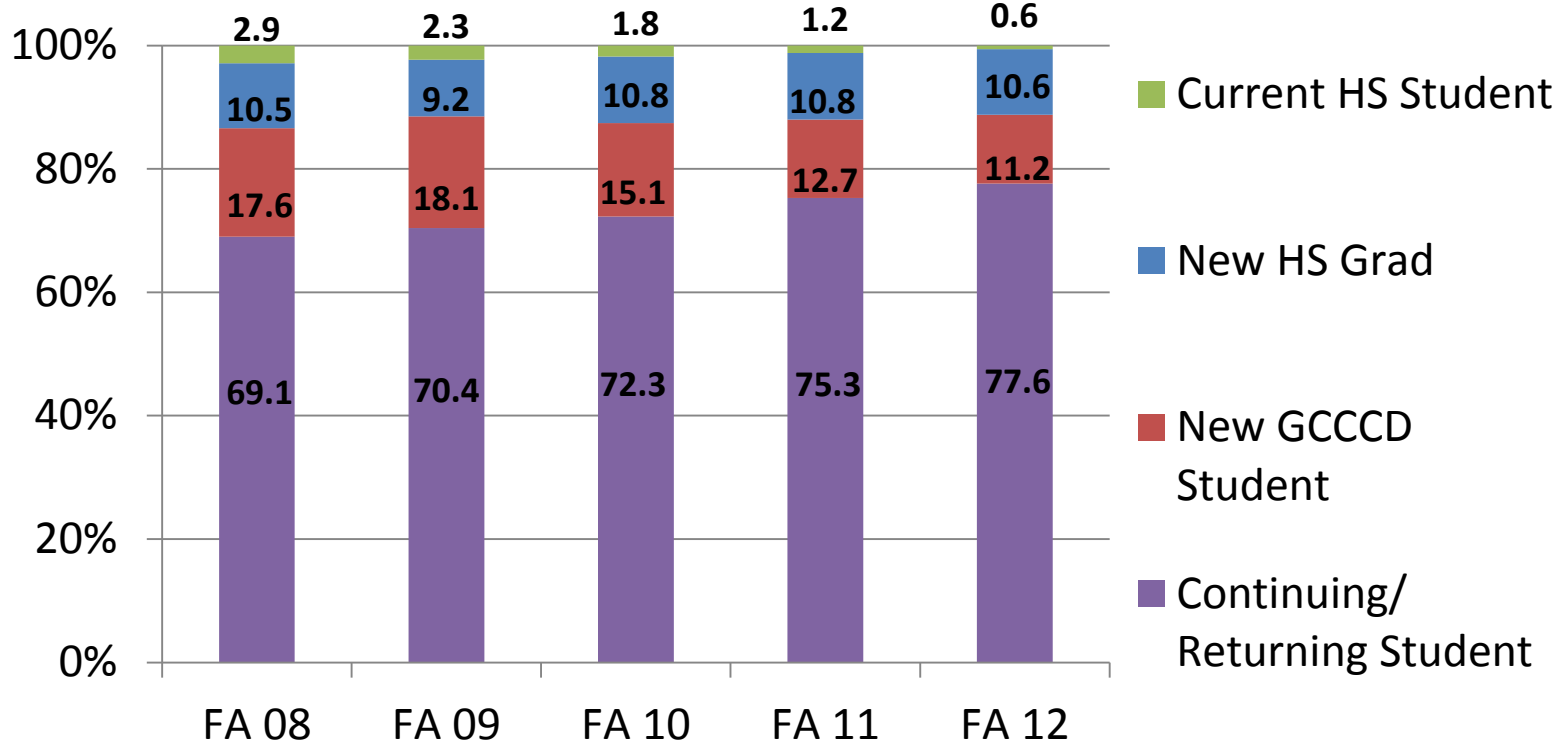
Strategic Planning Outcomes Report
2011-2012



1. Student Access
2. Learning & Student Success
3. Value & Support of employees
4. Economic & Community Development
5. Fiscal and Physical Resources



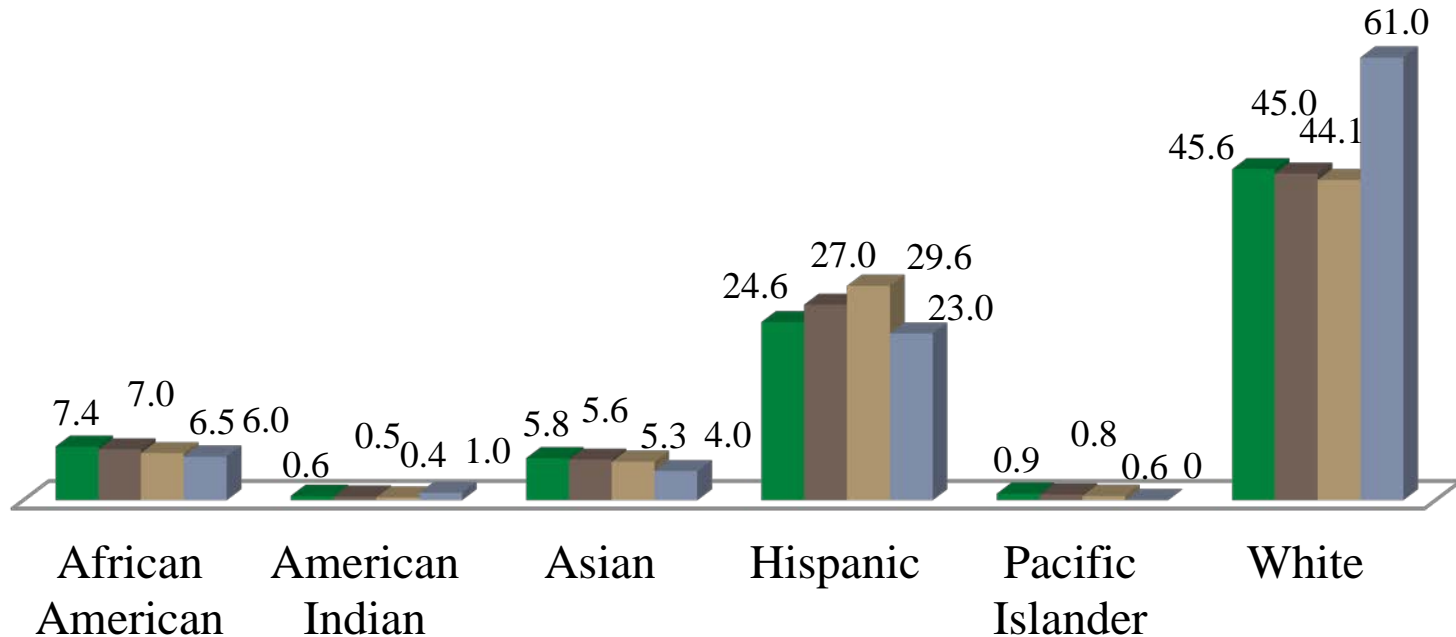
Strategic Areas of Focus



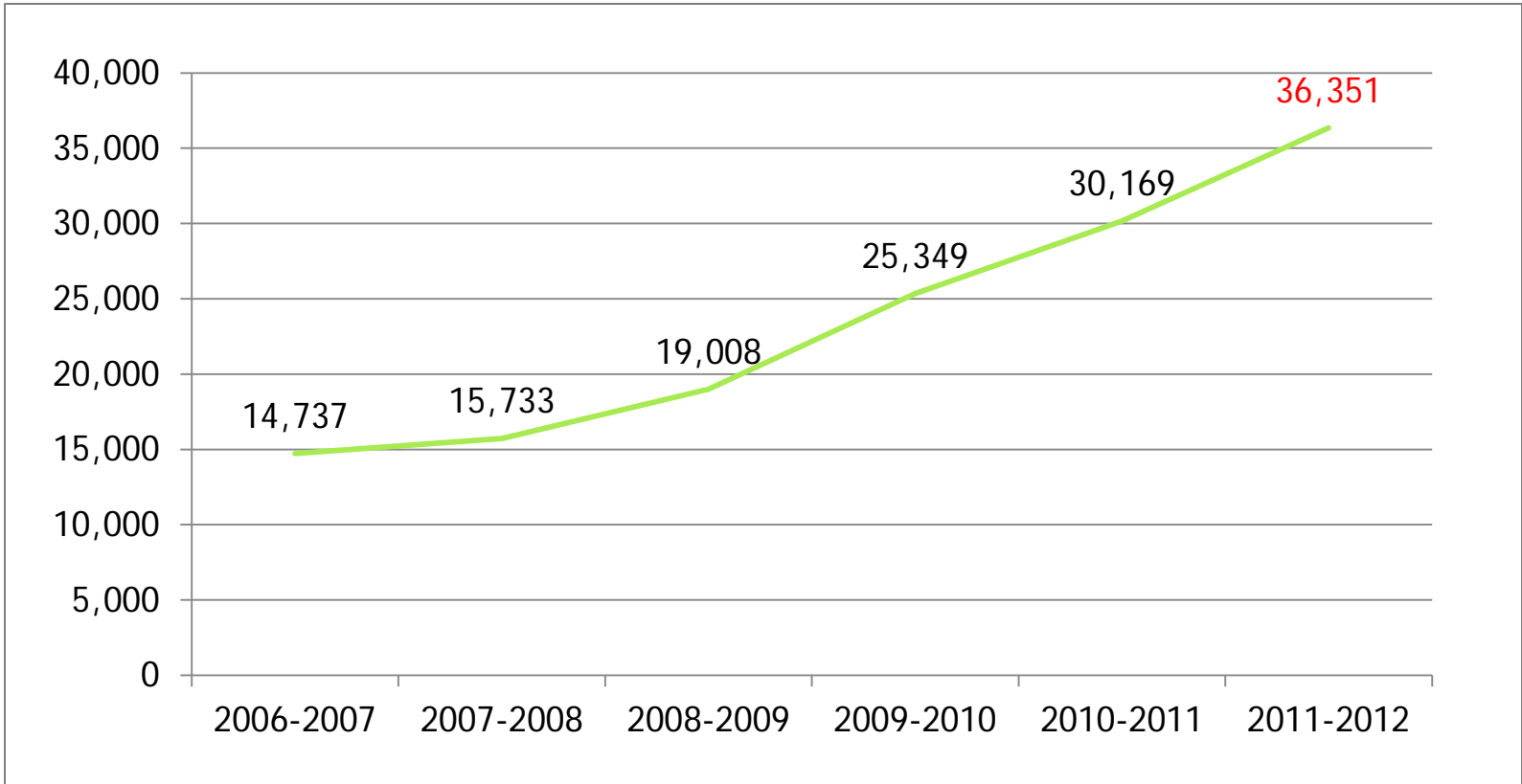
Student Access:

New High School Graduates Enrolled at GCCCD

■ Fall 2010 ■ Fall 2011 ■ Fall 2012 ■ 2015 Regional Projections



Student Access:
Student Demographics Representative of Area



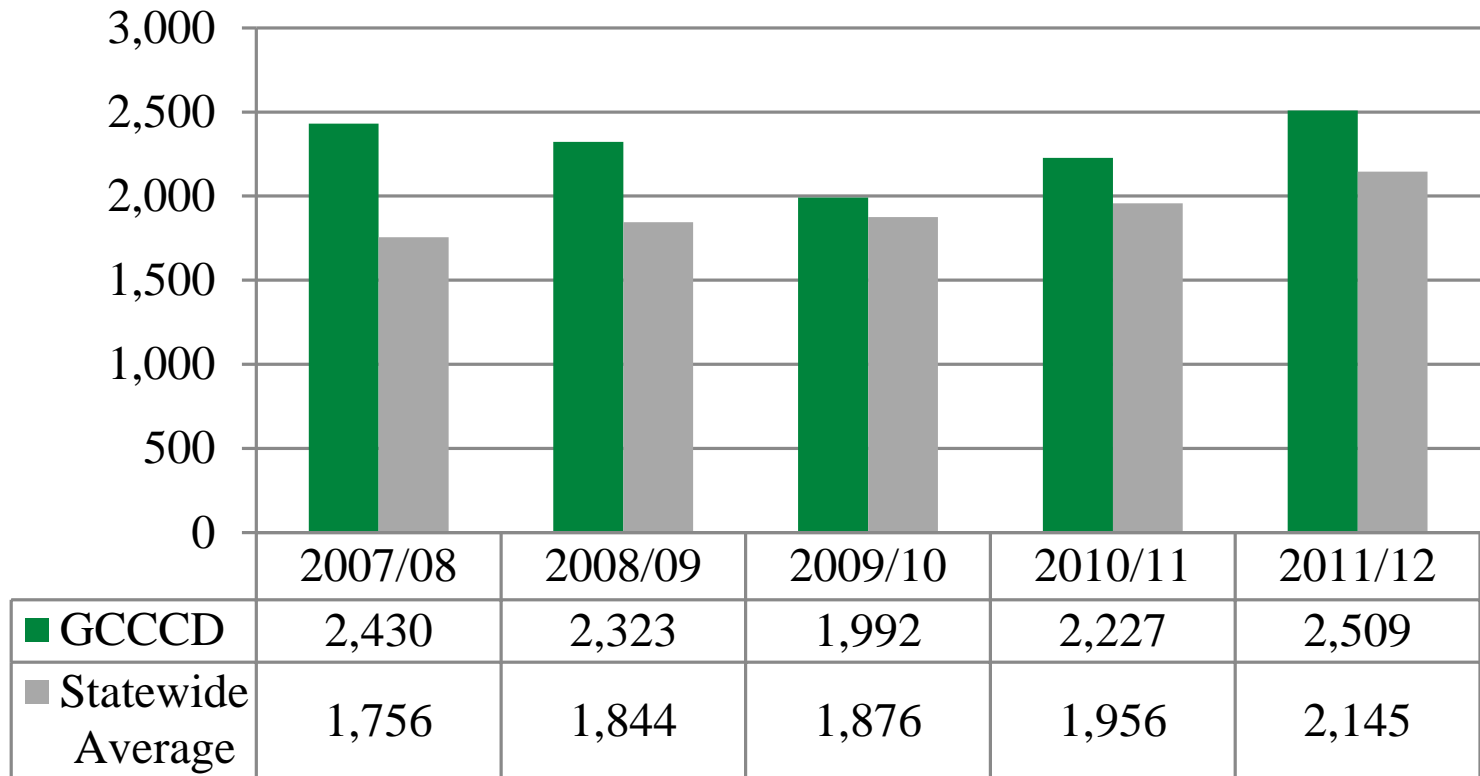
Student Access: Increase Student Financial Aid Applications



Overall	FA 2008	FA 2009	FA 2010	FA 2011
	%	%	%	%
Retained	81.5	82.5	83.4	83.5
Percent Change	+2.8	+1.0	+0.9	+0.1

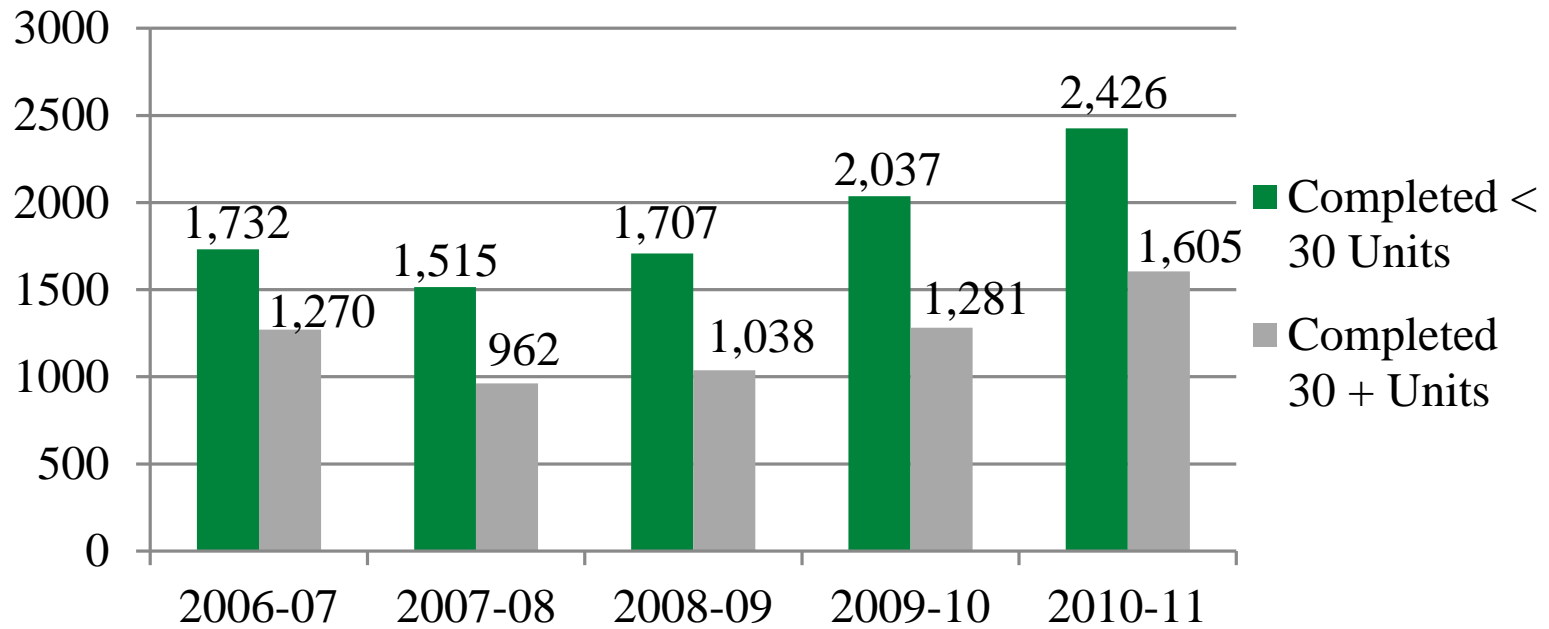
Overall	SP 2009	SP 2010	SP 2011	SP 2012
	%	%	%	%
Retained	81.2	82.2	82.3	83.5
Percent Change	+3.5	+1.0	+0.1	+1.2

Learning & Student Success:
Improved Retention/Course Completion



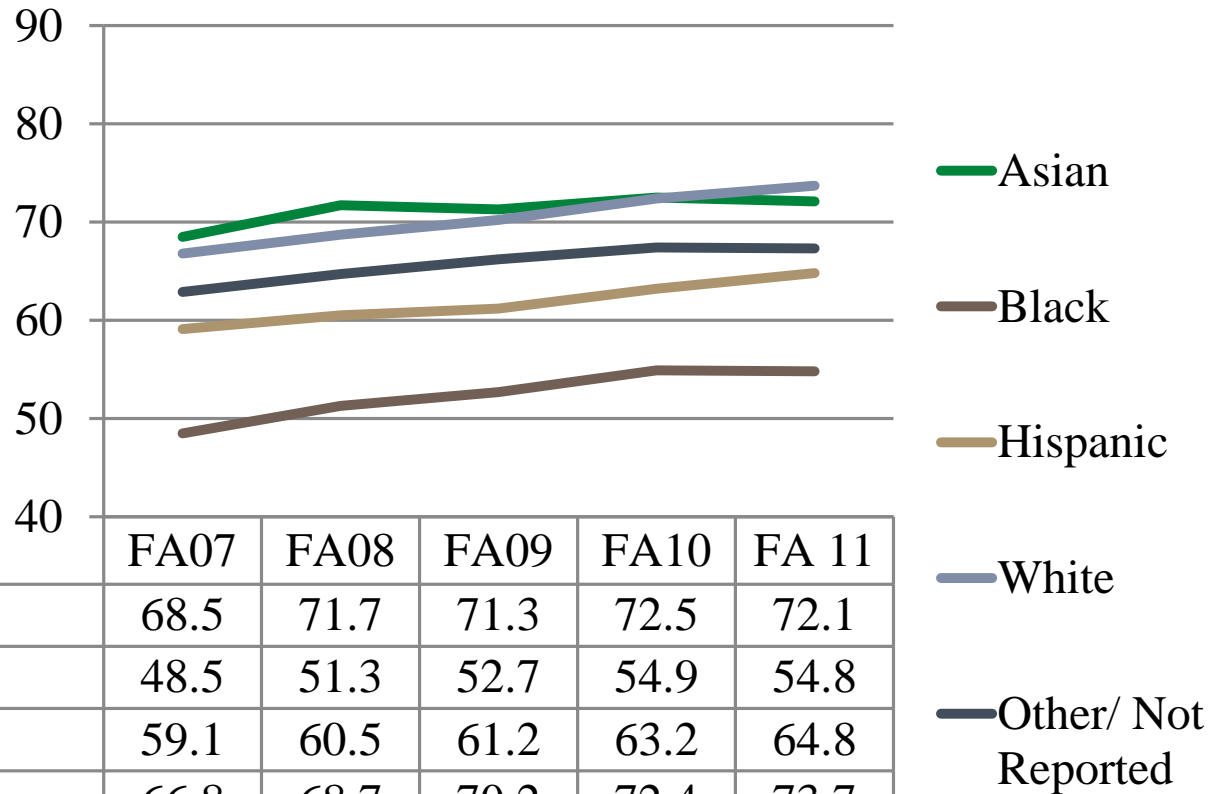
Learning & Student Success:
Increased Degree/Certificate Completion





Learning & Student Success:
Improved Transfer Rate



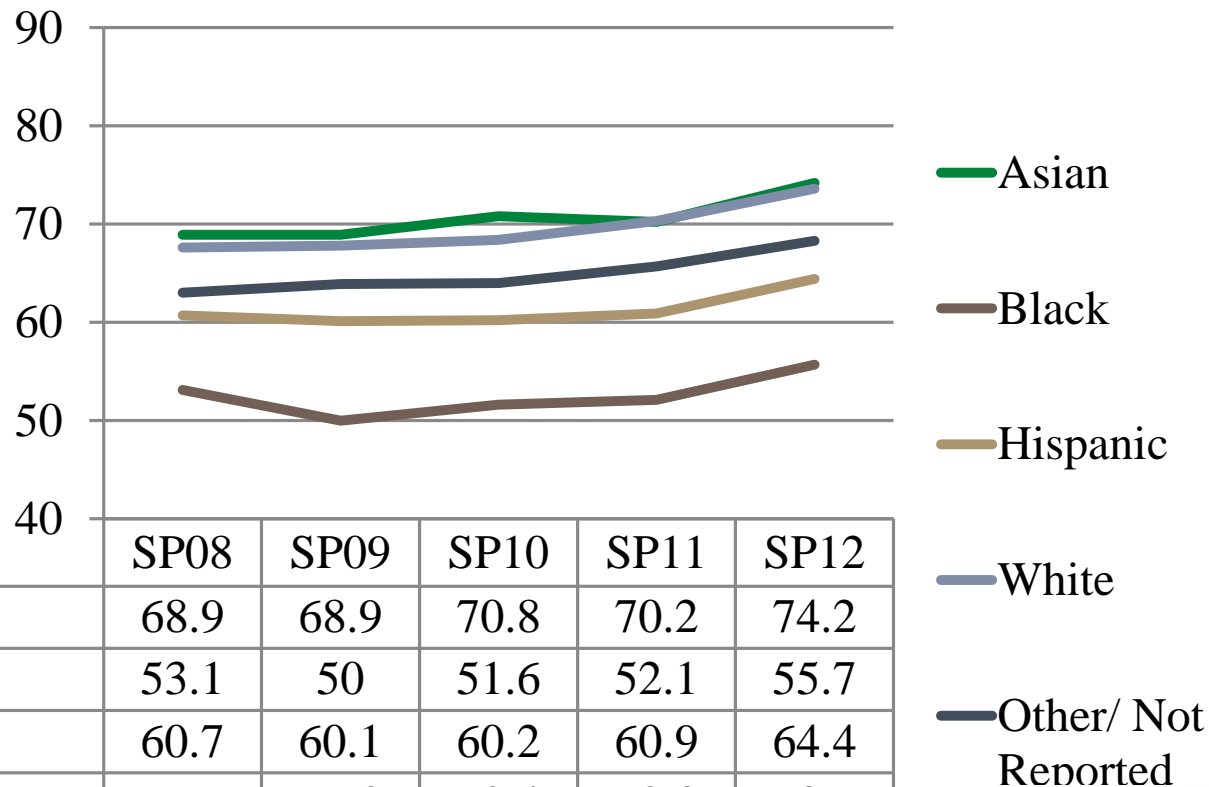


	FA07	FA08	FA09	FA10	FA 11
Asian	68.5	71.7	71.3	72.5	72.1
Black	48.5	51.3	52.7	54.9	54.8
Hispanic	59.1	60.5	61.2	63.2	64.8
White	66.8	68.7	70.2	72.4	73.7
Other/ Not Reported	62.9	64.7	66.2	67.4	67.3

Learning & Student Success:

Closure of the Achievement Gap: Course Success





	SP08	SP09	SP10	SP11	SP12
Asian	68.9	68.9	70.8	70.2	74.2
Black	53.1	50	51.6	52.1	55.7
Hispanic	60.7	60.1	60.2	60.9	64.4
White	67.6	67.8	68.4	70.3	73.6
Other/ Not Reported	63	63.9	64	65.7	68.3



Learning & Student Success:

Closure of the Achievement Gap: Course Success



SL0 & Integrated Planning Task Force 2011-2012

TracDat

Learning & Student Success:
Proficiency in SLOs

• Diversity, Equity and Inclusion Council Created

- Selected “At Home in the World” Participant
- Conducted Diversity Focus Groups
- Developed Internet Site
- Developed and Completed a Climate Survey
- Developing a Strategic Plan



Value & Support of Employees
Opportunities to Contribute
to
Fulfillment of Mission

- The average income midpoint for those with an associate's degree in the East County is **\$49,900**.
- GCCCD students enjoy a 15.4% ROI
- The East County economy annually receives \$94 million in income due to district operations
- Total impact to the East County economy adds up to \$477.5 million which represents 3.2% of total regional economy



Economic & Community Development

Increased economic impact
to the community

G R O S S M O N T
C O L L E G E



Grossmont College

Changing Lives through Education

EARLY ADMISSIONS OPPORTUNITY

- Served 448 New Students
- **Significantly more successful** than non EAO students
- 92% Retention
- 79% overall course success rates
- 91% fall-to-spring persistence

ACCESS:

Respond to Evolving Community Needs

Pilot Freshman Academy



- 54 students were enrolled
- Exceeded retention by 11% compared to non FA
- Exceeded success by 8% success compared to non FA students

Learning & Student Success:
Promote Success for Underprepared Populations

Mission Gorge Regional Park

Writing and Filming
Scientific and Cultural
Documentaries



Economic & Community Development:
*Innovative Partnerships that Meet Long-Term
Community Needs*

Wellness Initiative

- 127 employees participated since spring 2012
- 14 individuals that joined the County “Building Better Health” initiative traveling 14,000 in 10 months

Employee Promotions

- 25 Faculty – Academic Rank and Tenure
- 11 Classified Staff and Administrators



Value & Support of Employees



Cuyamaca College

Graduation Starts Today



- 1,594 students participated in a range of activities, programs, workshops, events, and conferences
- Departments sponsored events that provided capstone learning experiences for students

Learning & Student Success: Student Involvement and Engagement

Presidential Awards

- Faculty Service Awards
- Chancellor Classified Awards
- President-Sponsored “Cuyamaca Way” Awards
- Administrator recognized employee achievement
- “Divisional Recognition



Value & Support of Employees

- Business and Program Review Plan by Continuing Education and Workforce Division
- Business Developer hired
- Branding and visibility to regional employers

Economic & Community Development:

*Responsive to
Employer Labor Demands*



- Paper light
- Monitored Utilities
- Replaced old water nozzles saved 255.83 gallons of water
- Savings in: Gas by 21.7%; Water 9.5%; Electricity 7.5%
- Closure of large buildings in the summer
- Summer Savings
- Document Imaging Project



Fiscal & Physical Resources:

Plan and implement sustainability initiatives on campus



GROSSMONT-CUYAMACA
COMMUNITY COLLEGE DISTRICT



District Services

- Early Retirement Plan
- Completion of Educational Master Plan
- New Foundation
- Linking Budget and Planning for District Services



District Services



How did we do?

SOCIAL STUDIES	B+	A	A-	A-	A	A
SCIENCE	A-	A-	A-	B-	A	B+
ART	cv	cv		cv	cv	
MUSIC	cv	cv		cv	cv	
PHYSICAL EDUCATION						
ARITHMETIC	A-	A-	A-	B+	A	A-
Level of instruction						
Understands the meaning of numerals	+	+		+	+	
Knows and uses number facts	+	+		+	+	
Solves problems by reasoning	+	+		+	+	
LANGUAGE	A-	A-	A-	A-	A	A
Level of instruction						
Expresses himself orally	+	+		+	+	
Expresses himself in written work	+	+		+	+	
SPELLING	A-	A-	A-	A	A-	A-
Level of instruction						
Learns words from spelling list	+	+		+	+	



CONDUCT

ACHIEVEMENT

